

**GX0000010: GASOLINE 95 RON NWE FOB BARGES****INDEX DESCRIPTION**

This index reflects the finished-grade gasoline barge market in the Amsterdam-Rotterdam-Antwerp (ARA) refined products hub.

INDEX DETAILS

Start date	02-Jan-2008
Commodity	Gasoline
Frequency	Daily
CCY / UOM	USD / MT
Precision	2 decimal places
Periods	1, Prompt
Data types	Mid, High, Low
Pricing basis	Flat
Delivery basis	FOB Barges
Trading hub	NWE
Timezone	Europe/London
Holiday calendar	Holidays_GX_Europe

INDEX QUALITY SPECIFICATION

EN 228 gasoline with minimum 95 RON octane and a reference density of 0.755 kg/l. The maximum sulphur content is 10ppm. The aromatics limit is a maximum of 35%.

CRITERIA FOR INCLUSION

Index calculation inputs comprise:

- Physical bids, offers and trades during 1530 - 1630
- Eurobob Oxy barge swaps
- Previous assessed differential to physical GX Eurobob Oxy barges (GX0000002)

Assessment date range:

3-15 (Mon-Tue) / 5-15 (Wed-Fri) days forward

Operational tolerance: +/-5% of transacted barge size

Lot size: 1,000-5,000MT

The FOB index reflects AR loading. Loading nominations at Antwerp or Terneuzen will also be reflected.

Russian-origin material is excluded from consideration.

ASSESSMENT TIMES

TIME	DETAILS
1630	London Close

CALCULATION APPROACH

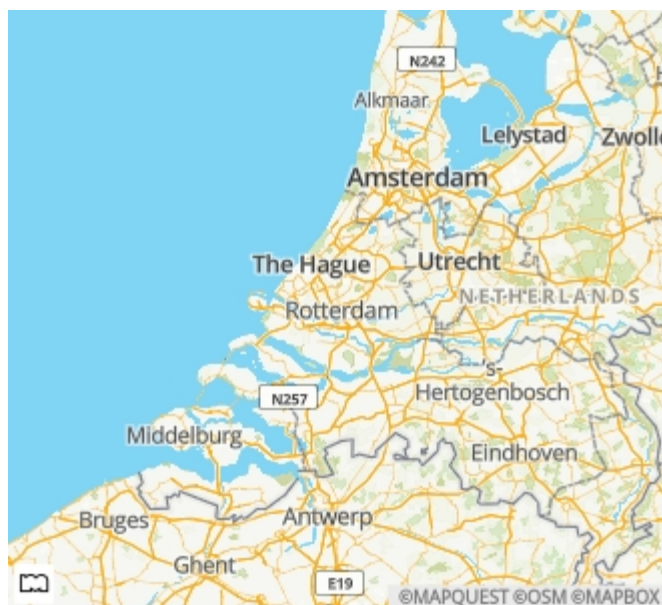
TRADE DATA APPROACH	Y/N
Priority to reported and concluded transactions	N
Sole-sourced data from trading principals accepted	N
Inter-affiliate data accepted as valid	N

The calculation inputs are utilised to establish the most competitive physical indication at the midpoint of the 3-15 or 5-15 day ahead range. The index represents the price at 1630

based on the most competitive indication. In the event of no physical indications, Eurobob Oxy swaps and the previous day's physical assessed differential to GX Eurobob Oxy barges are used to establish competitive value.

ALIAS DEFINITION

ALIAS	TIME	PERIOD TYPE	PERIOD
PREMUNLBRG	1630	Prompt	1

LOCATION**FACTSHEET INFORMATION**

Factsheet version	3.0
Factsheet valid from	12-Sep-2023
Factsheet valid to	(ongoing)

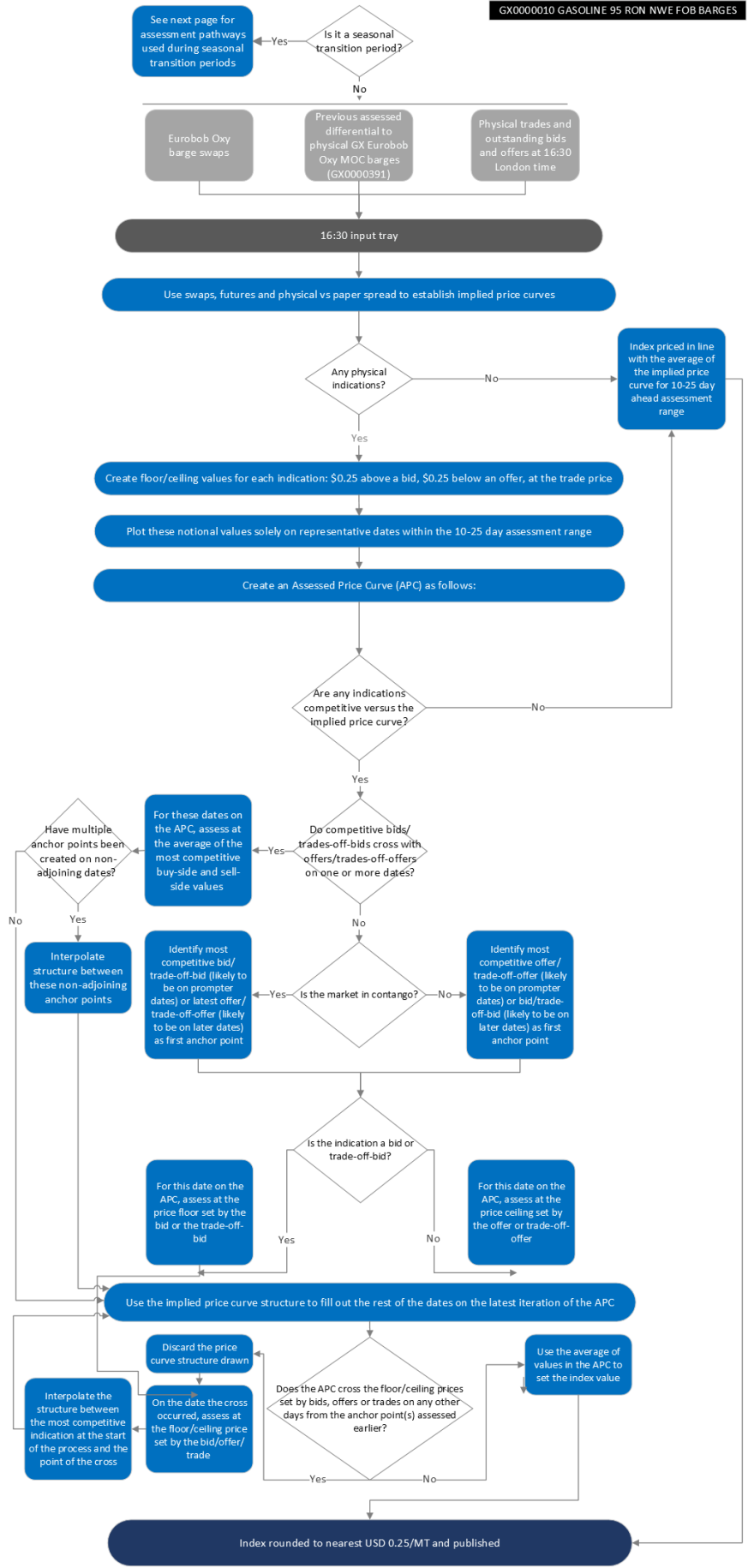
RELATED INDEXES**CHILD INDEXES:**

☒GX0000602	Gasoline 95 RON NWE FOB Barges Weekly Average
☒GX0000827	Not Used
☒GX0010945	Not Used



GX0000010: GASOLINE 95 RON NWE FOB BARGES

GX0000010 GASOLINE 95 RON NWE FOB BARGES





GX0000010: GASOLINE 95 RON NWE FOB BARGES

