

**GX0001752: ULSD NWE CIF CARGOES RUSSIA INCLUSIVE****INDEX DESCRIPTION**

This index reflects the prompt delivered market for ultra-low sulphur diesel (ULSD) in Northwest Europe from all origins, including Russia.

INDEX DETAILS

Start date	01-Jun-2022
Commodity	Diesel
Frequency	Daily
CCY / UOM	USD / MT
Precision	2 decimal places
Periods	1, Prompt
Data types	Mid, High, Low
Pricing basis	Flat
Delivery basis	CIF Cargoes
Trading hub	NWE
Timezone	Europe/London
Holiday calendar	Holidays_GX_Europe

INDEX QUALITY SPECIFICATION

Ultra-low sulphur diesel grades with a clear and bright aspect reflecting Benelux or French specifications with a maximum sulphur content of 10ppm and density of 0.820-0.845 kg/l. Trace amounts of unintentionally-blended biodiesel up to 0.3% are acceptable.

CRITERIA FOR INCLUSION

Index calculation inputs comprise:

- Physical bids / offers / trades during 1545 – 1630
- ICE Gasoil futures prices at 1630
- North West European diesel cargo swaps prices at 1630

Assessment date range: 10-25 days forward

Operational tolerance: +/-10% of transacted cargo size

All physical indications are normalised to 30,000MT.

Bids, offers and deals for other 10ppm diesel grades delivered to typical CIF NEW locations, such as UK or German specification, will be considered in the index process and normalised to the basis specification.

Seasonal transition dates between winter and summer grades will be announced at least one month prior to the effective dates. Exact dates may vary in line with trading activity.

The CIF index reflects ARA delivery with typical charter-party options for the Hamburg-Bordeaux range and other North West Europe ports in the Baltic, North Sea, UK and North Spain range.

Forward curve inputs: swaps and Gasoil futures values at 1630

ASSESSMENT TIMES

TIME	DETAILS
1630	London Close

CALCULATION APPROACH

TRADE DATA APPROACH	Y/N
Priority to reported and concluded transactions	N
Sole-sourced data from trading principals accepted	N
Inter-affiliate data accepted as valid	N

LOCATION**FACTSHEET INFORMATION**

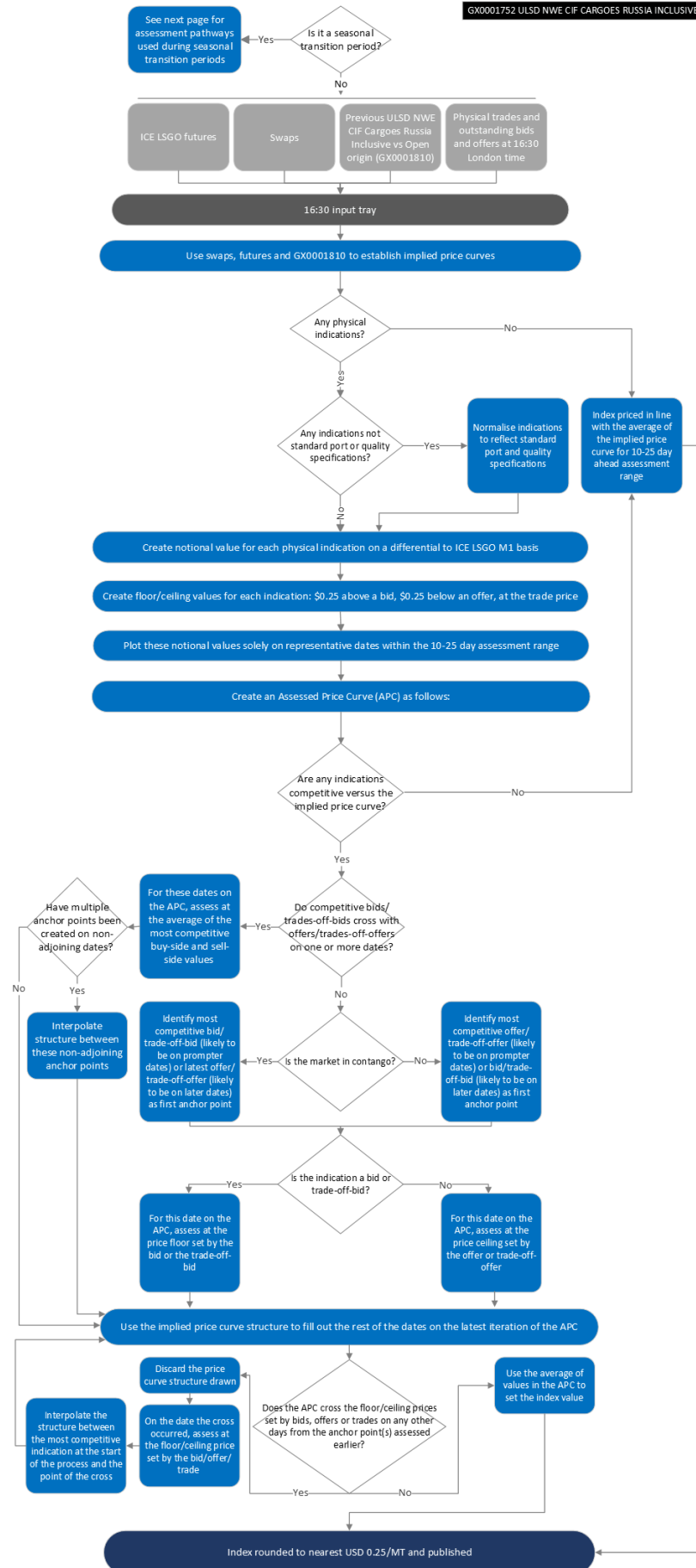
Factsheet version	1.0
Factsheet valid from	12-Oct-2022
Factsheet valid to	(ongoing)

RELATED INDEXES**CHILD INDEXES:**

- ☑ GX0001811 ULSD NWE CIF Cargoes Russia Inclusive Monthly Average
- ☑ GX0001810 ULSD NWE CIF Cargoes Russia Inclusive vs Open Origin



GX0001752: ULSD NWE CIF CARGOES RUSSIA INCLUSIVE





GX0001752: ULSD NWE CIF CARGOES RUSSIA INCLUSIVE

